



scoop™
TRENDS





Hue Horizon

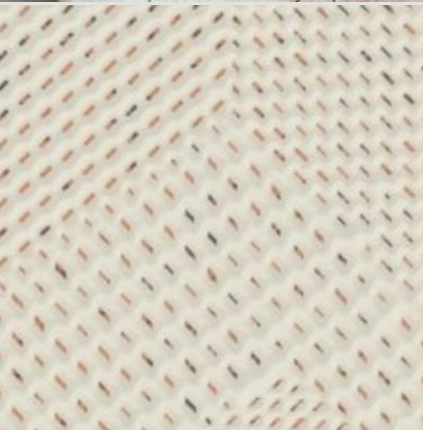
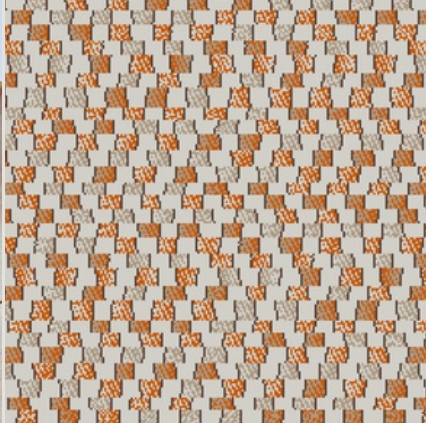
Translucent, jelly-like textures and vivid-to-dark hues evoke wonder and joy, ideal for mesmerizing color-blocking or ombre effects.





Trendscape

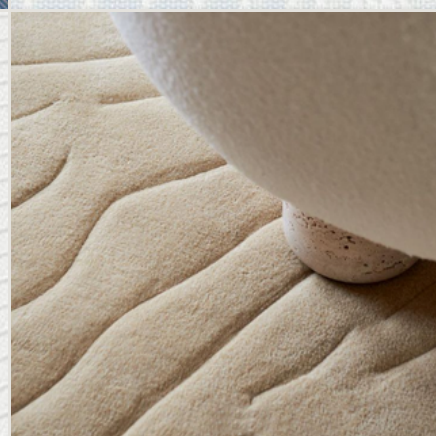
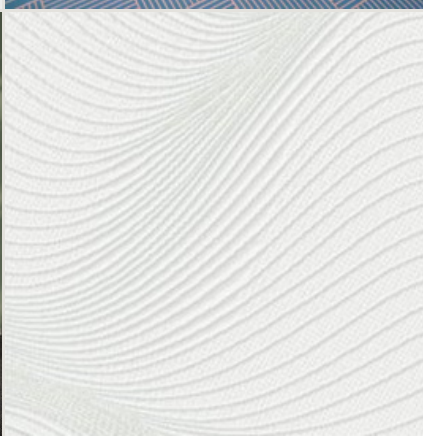
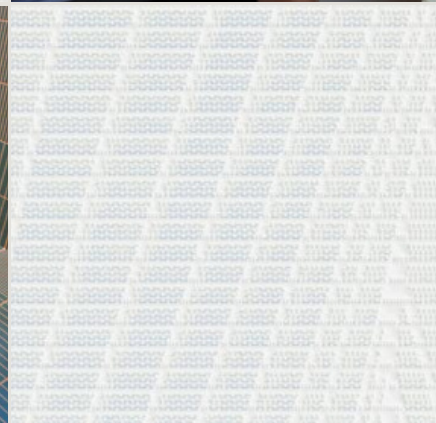
Rest and relaxation are top priorities, supported by quality bedding, soothing scents, and quilt-look fabrics that enhance comfort and well-being.





Future Forecast

Connect with nature through organic shapes, textured surfaces, and earthy tones like primal green, dusted ochre, and soft grass.



A close-up, macro shot of a dark, textured fabric, possibly a carpet or rug, featuring numerous small, colorful speckles in shades of blue, red, and yellow. The lighting is dramatic, highlighting the intricate details of the fibers and the vibrant colors against a dark background. The overall mood is sophisticated and modern.

Responsible Living

In our industry, sustainability and responsible living mean using eco-friendly materials and manufacturing processes to reduce environmental impact, ensuring healthier sleeping environments.

Colors Without Compromise

The textile industry is one of the world's most resource-intensive sectors, generating millions of tons of waste each year. **Recycled yarns** offer a smarter alternative by transforming **post-consumer** and **post-industrial** waste, such as fabric scraps or PET bottles, into high-quality fibers. This approach reduces landfill waste and pollution while conserving valuable raw materials and energy.

RECYCLED YARNS

Our recycled yarns are made from a variety of materials, including cotton, denim, and polyester coming from water bottles, textile waste and even ocean bound plastics. By recycling existing products, we can significantly reduce our carbon footprint and preserve the planet for future generations. On top of that, our customers can enjoy the same high-quality products they expect from BekaertDeslee, but with the added benefit of knowing that they are making a positive impact on the world.